

TINGLES ISLAND QUADRANGLE
MARYLAND
7.5 MINUTE SERIES (ORTHOPHOTOQUAD)



State of Maryland
Parris N. Glendening, Governor
Department of Natural Resources
Sarah J. Taylor-Rogers, Secretary
Resource Assessment Service
Paul Massicot, Director
Maryland Geological Survey
Emery T. Cleaves, Director





Shoreline Changes
Tingles Island, MD

Compiled by
Jennifer A. Stott, E. Lamere Hennessee, and Randall T. Kerhin

Maryland Geological Survey
Coastal and Estuarine Geology Program
2300 St. Paul Street
Baltimore, Maryland 21218
Telephone: (410) 554-5500
Website: www.mgs.md.gov

1999

LEGEND

-  1849 Shoreline
-  1942 Shoreline
-  1962 Shoreline
-  1989 Shoreline

SOURCES OF DATA

Base Image
Composite of resampled digital orthophoto quarter quads (Tingles Island - NE, NW, SE, SW) produced by the Maryland Department of Natural Resources (DNR) from aerial photography flown on April 12, 1989

Shorelines
1849 - Historical Shorelines CZM Map 92A (Maryland Geological Survey, 1975); digitized on screen using TNTmips

1942, 1962 - National Oceanic and Atmospheric Administration - National Ocean Service T-sheets listed below; digitized on screen using TNTmips

T-sheet	Field Edit	Date of Photography
T-8128	none	1942
T-12083	none	1961
T-12084	none	1961, 1962
T-12086	none	1961, 1962
T-12087	none	1962

1989 - Shoreline extracted from a DNR digital wetlands delineation based on photo interpretation of 1989 digital orthophoto quarter quads

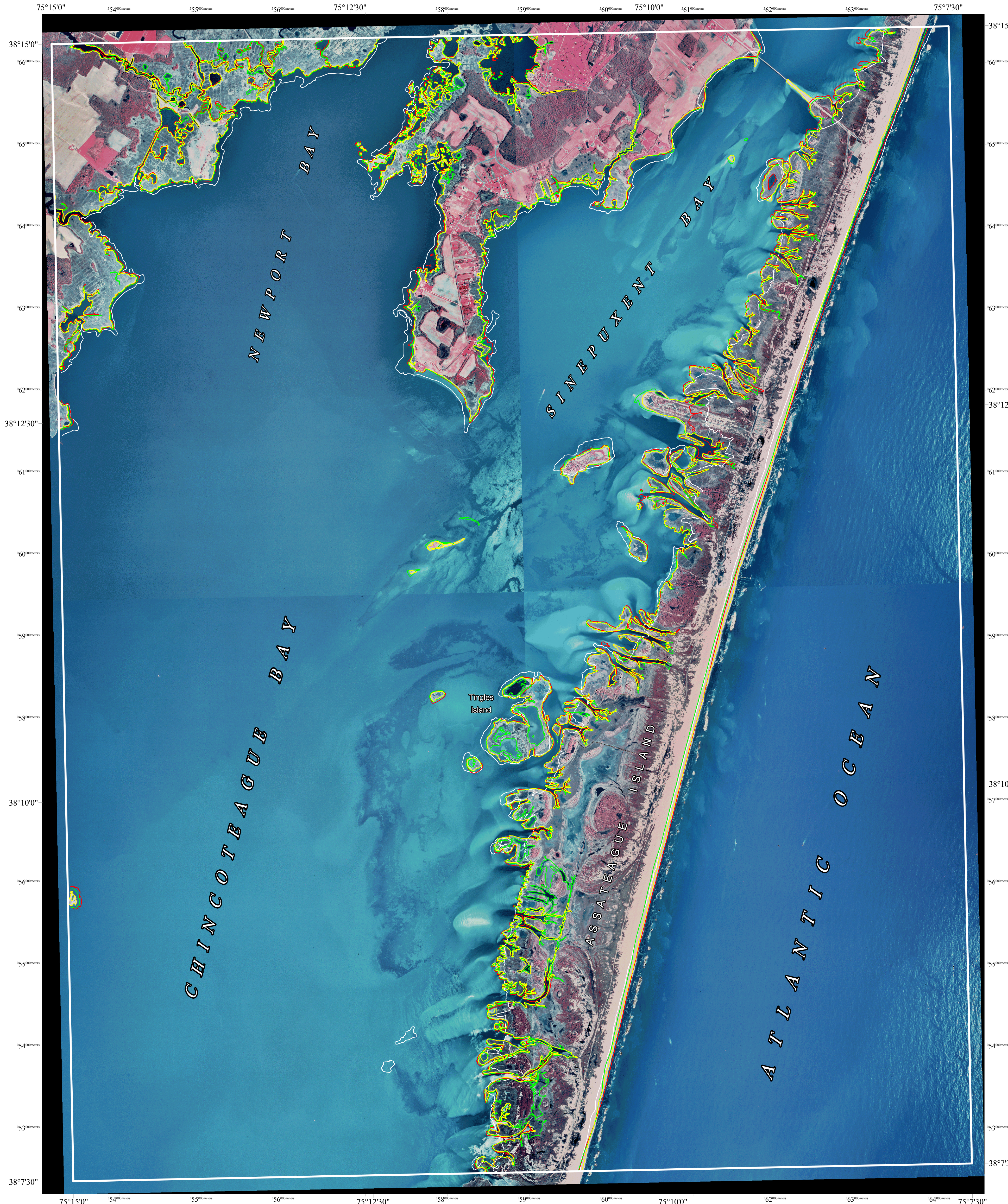
ACKNOWLEDGMENTS

This map was prepared using the geographic information system TNTmips by MicroImages, Inc.

Partial funding was provided by a grant from the National Oceanic and Atmospheric Administration (Award No. NA 870Z0236), administered by the Maryland Coastal Zone Management Program, Department of Natural Resources (CZM Grant M99-028 CZM 031).

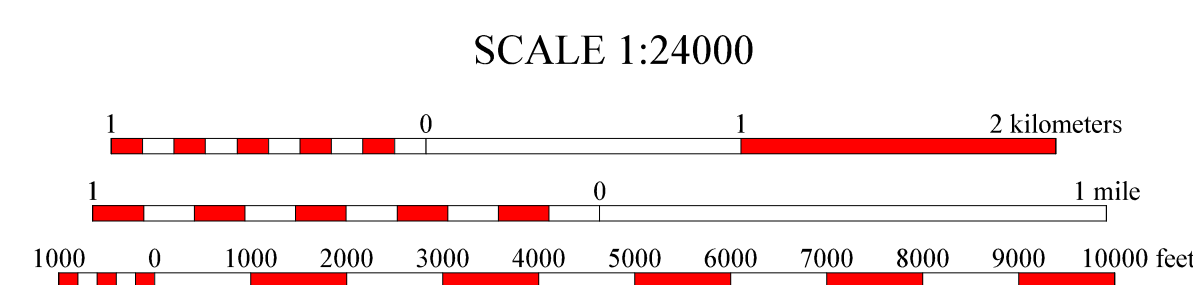
The facilities and services of the Maryland Department of Natural Resources are available to all without regard to race, color, religion, sex, sexual orientation, age, national origin or physical or mental disability.

This document is available in alternative format upon request from a qualified individual with a disability.



North American Datum of 1983 (NAD 83)
Projection and 1000-meter grid ticks:
Maryland State Plane Coordinate System

TINGLES ISLAND, MD
MGS-99-092-1
First Edition
DATE OF PHOTOGRAPHY
April 12, 1989



HORIZONTAL DATUM NAD 83



1	2	3
4	5	6
7	8	

1 Ninepin
2 Berlin
3 Ocean City
4 Public Landing
5 - none -
6 Boxiron
7 Whittington Point
8 - none -

INDEX TO ADJOINING 7.5' MAPS

