

HALLWOOD QUADRANGLE
 VIRGINIA-MARYLAND
 7.5 MINUTE SERIES (ORTHOPHOTOQUAD)



State of Maryland
 Parris N. Glendening, Governor
 Kathleen Kennedy Townsend, Lt. Governor
 Department of Natural Resources
 J. Charles Fox, Secretary
 Karen M. White, Deputy Secretary
 Resource Assessment Service
 Paul O. Massicot, Director
 Maryland Geological Survey
 Emery T. Cleaves, Director

Shoreline Changes
 Hallwood Quadrangle, VA-MD

Compiled by

Maryland Geological Survey
 Coastal and Estuarine Geology Program
 2300 St. Paul Street
 Baltimore, Maryland 21218
 Telephone: (410) 554-5500
 Website: www.mgs.md.gov

2001

LEGEND

 1989 Shoreline

SOURCES OF DATA

Base Image
 Resampled digital orthophoto quarter quad (Hallwood - NW) produced by the Maryland Department of Natural Resources (DNR) from aerial photography flown on April 14, 1989

Shorelines
 1989 - orthophotoquad shoreline extracted from a DNR digital wetlands delineation based on photo interpretation of digital orthophoto quarter quad

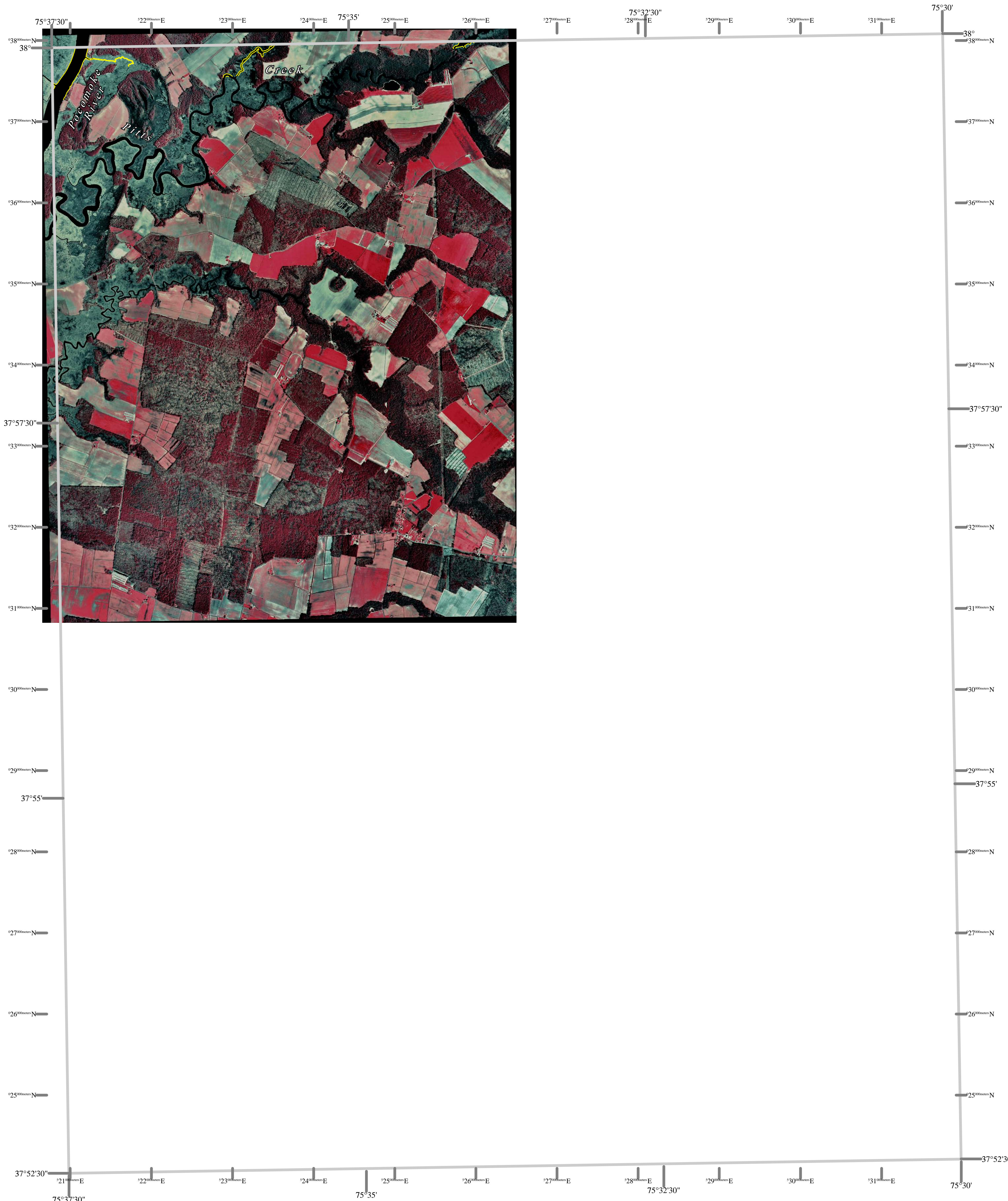
ACKNOWLEDGMENTS

This map was prepared using the geographic information system TNTmips by MicroImages, Inc.

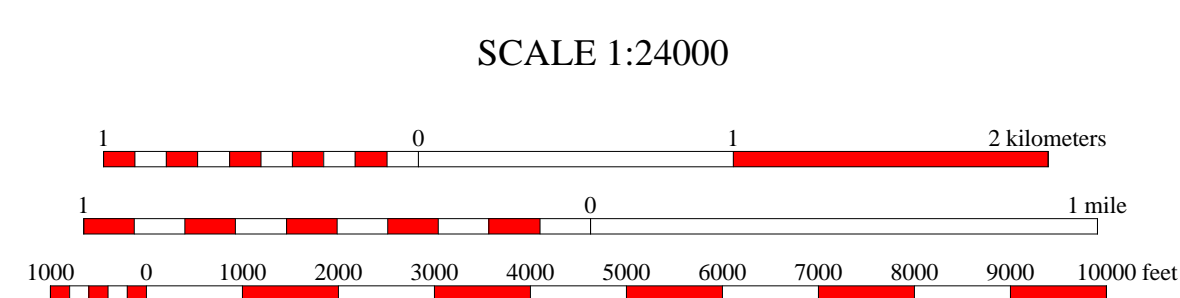
Partial funding was provided by a grant from the National Oceanic and Atmospheric Administration (Award No. NA 07OZ0118), administered by the Maryland Department of Natural Resources, Coastal Zone Management Program (CZM Grant M01-056 CZM 040).

The facilities and services of the Maryland Department of Natural Resources are available to all without regard to race, color, religion, sex, sexual orientation, age, national origin, or physical or mental disability.

This document is available in alternative format upon request from a qualified individual with a disability.



North American Datum of 1983 (NAD 83)
 Projection and 1000-meter grid ticks:
 Maryland State Plane Coordinate System



HORIZONTAL DATUM NAD 83



HALLWOOD, VA-MD
 MGS-01-102-1
 First Edition
 DATE OF PHOTOGRAPHY
 April 14, 1989

1	2	3
4	5	6
7	8	

1 Kingston
 2 Pocomoke City
 3 Giddletree
 4 Saxts
 5 Chincoteague West
 6 Parksley
 7 Bloxom
 8 Wallops Island

INDEX TO ADJOINING 7.5' MAPS

